

Seltos

Badass by Design

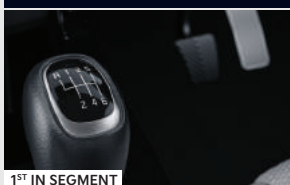


Movement that inspires

Meet the all-new Kia Seltos.

Now more bold, smart and
inspiring than ever.

MORE EASE



1ST IN SEGMENT

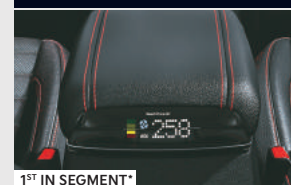
A New-age iMT (Intelligent Manual Transmission) is the future of driving that lets you enjoy an effortless clutch-free drive even in manual mode

MORE SPORTY



Paddle Shifters help in quick gear shift allowing you to get a more intimate and immersive driving experience

MORE PURITY



1ST IN SEGMENT

Smart Pure Air Purifier with virus and bacteria protection, so you and your loved ones can breathe the cleanest air inside the car



Impressive Exterior Design

With captivating presence and striking design, the all-new Kia Seltos comes fully-loaded with many stylish features that add to its bold and badass stance.

SIGNATURE TIGER NOSE GRILLE



The Tiger Nose Grille lends an aggressive attitude to the Seltos

CROWN JEWEL LED HEADLAMPS



The aesthetically crafted Headlamp cluster gives Seltos a distinctive character

HEARTBEAT LED TAIL LAMPS



Scintillating Tail Lamps make the muscular back look premium and sporty

ICE CUBE LED FOG LAMPS



Ice Cube shaped Fog Lamps give Seltos a cool, badass look

DUAL MUFFLER DESIGN



The striking Dual Muffler Design adds to the sportiness of the Seltos

POWERFUL SMARTSTREAM G1.4 T-GDI PETROL ENGINE



Power
140 ps/ 6 000 rpm



Torque
242 Nm/1500 ~ 3 200 rpm



6MT



7DCT

ADVANCED SMARTSTREAM G1.5 PETROL ENGINE



Power
115 ps/ 6 300 rpm



Torque
144 Nm/ 4 500 rpm



1ST IN SEGMENT

6iMT



6MT



IVT

REFINED 1.5L CRDI VGT DIESEL ENGINE



Power
115 ps/ 4 000 rpm



Torque
250 Nm/1500~2750 rpm



6MT



6AT

MORE ADVANCED

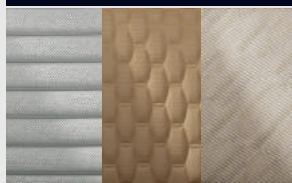


1ST IN SEGMENT*

Voice Controlled Sunroof and Driver Window for conveniently operating while driving

*Driver window control is 1st in Segment

MORE ALLURING



Exciting Interiors let you enjoy shades of your personality in your car

MORE UPDATED



OTA Map Updates ensure that your car is always up-to-date to take you to new roads

MORE INTELLIGENT



UVO gives you the most advanced connected car experience with over 58 smart features



Plush Interior Design

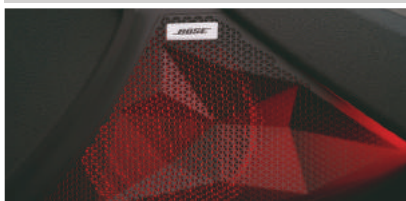
The plush Kinetic Art Lounge inspired interiors have been designed in a way that the cockpit makes your drive superior and extra comfortable.

360° CAMERA WITH BLIND VIEW MONITOR



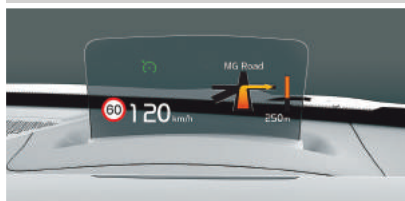
The 360° Camera with Blind View Monitor keeps you aware of your surroundings at all times

BOSE PREMIUM 8-SPEAKER SOUND SYSTEM



The Sound System is a treat for the ears. It will set your mood right for every drive

SMART 20.32 CM (8.0") HEAD-UP DISPLAY



HUD makes driving safer by minimizing the movement of driver's line of sight

26.03 CM (10.25") ADVANCED HD TOUCHSCREEN NAVIGATION



The connected HD touchscreen makes the cabin look futuristic and reduces distraction while driving

VENTILATED FRONT SEATS



Ergonomically designed Ventilated Front Seats add comfort and convenience to your drive

ADVANCED 17.78 CM (7.0") COLOR INSTRUMENT CLUSTER



The advanced Color Display Cluster provides multiple detailed information

REAR DOOR SUNSHADE CURTAIN



The Sunshade Curtain protects you from direct sunlight for a soothing journey

WIRELESS SMARTPHONE CHARGER



Conveniently charge your phone on the go to ensure that your phone never runs out of battery

DRIVE MODES & TRACTION CONTROL



3 Drive Modes and 3 Traction Modes help you to stay in control at all times

SIX AIRBAGS WITH ESC, VSM, HAC, BA



Our multi-directional safety package allows you to drive with complete peace of mind

KEY FEATURES



STANDARD PACK	
GTX(O) Smartstream G1.4T-GDI 6MT	
<ul style="list-style-type: none"> Crown Jewel LED Headlamps, Heartbeat LED DRLs, Sweeping LED Light Bar, Ice Cube LED Fog Lamps, Heartbeat LED Tail Lamps, Emergency Stop Signal Tilt & Telescopic Steering Wheel, Electric Adjust Outside Rear View Mirror with LED Turn Signal Outside Rear View Mirror Auto Folding, Auto Light Control, Front Tray USB Charger, Luggage Light, Rear USB Charger & Tray, Rear Defogger Floating Type Roof Rail, Rear Spoiler, Front/Rear Mud Guard, Skid Plates with Red Accents Leather Wrapped D-cut Steering Wheel with GT Line Logo, Sporty Alloy Pedals, Rear Seat Recline 2 Step Rear Door Sunshade Curtains, Passenger Seatback Upper Pocket, 60:40 Split Rear Seat Folding with Center Armrest, Smart Key with Push Button Start, Auto Cruise Control Rear View Camera with Guidance, Driving Rear View Monitor, Fully Automatic Air Conditioner with Silver Garnish, Rheostat, 8.89 cm (3.5") Mono Color Instrument Cluster LED Sound Mood Lights, Black & Beige Dual Tone Leatherette Sports Seats with Red Stitching ABS with EBD, Airbags (Driver & Passenger), All Wheel Disc Brakes, Power Steering, R17 - 43.18 cm (17") Crystal Cut Alloy Wheels with Red Center Cap, Rear Parking Sensors High Line Tyre Pressure Monitor, Electric Sunroof with LED Room Lamp ESC, Hill Hold Control, Vehicle Stability Management, Brake Assist, Red Brake Caliper (Front) 26.03 cm (10.25") HD Touchscreen Navigation, UVO Connected Car with OTA Map Updates, Smartwatch Connectivity app, AI Voice Recognition with "Hello Kia" Wake-up Command Smart Pure Air Purifier with Virus & Bacteria Protection, Perfume Diffuser Auto Antilare Inside Rear View Mirror (ECM) with UVO Control Buttons, Metal Scuff Plates with Seltos logo, Ventilated Front Seats, 8-way Driver Power Seat BOSE Premium Sound System with 8 Speakers 	
PLUS PACK	
GTX+ (In addition to GTX (O)) Smartstream G1.4T-GDI 6MT / 7DCT, D1.5 6AT	
<ul style="list-style-type: none"> Side & Curtain Airbag Smart 20.32 cm (8.0") Head-up Display Advanced 17.78 cm (7.0") Color Display Cluster Smartphone Wireless Charger, Rain Sensing Wipers Smart Key Remote Engine Start (7DCT / 6AT Only) Traction Modes - Sand/Mud/Wet (7DCT / 6AT Only) Paddle Shifters (7DCT / 6AT only) Multi Drive Modes - Normal/Eco/Sports (7DCT / 6AT Only) Black Leatherette Sports Seats with Red Stitching Dual Tone Roof Color (Optional) Front Parking Sensors Solar Glass - UV Cut (Front Windshield, Door Windows) 360 Degree Camera, Blind View Monitor in Cluster 	

KEY FEATURES



STANDARD PACK	
HTE Smartstream G1.5 6MT, D1.5 6MT	
<ul style="list-style-type: none"> ABS with EBD, Dual Airbags (Driver & Passenger), R16 - 40.62 cm (16") Steel Wheels & Full Cover, Front Disc Brakes, Rear Disc Brakes (D1.5 Only), Rear Parking Sensors, Manual Air Conditioner, Power Windows (All Doors), Front Armrest with Storage Box, Emergency Stop Signal, Front Tray USB Charger, Rear USB Charger & Tray 8.89 cm (3.5") Mono Color Instrument Cluster, Skid Plates (Front & Rear), Projector Head Lamps, Rear AC Vents, Driver Seat Height Adjust (Manual), Tilt & Power Steering Wheel, Keyless Entry, Central Locking, Steering Mounted Audio Control, Sunglass Holder, 9.65 cm (3.8") 2DIN Audio with Bluetooth, 4 Speakers, Shark Fin Antenna 	
STANDARD PACK	PLUS PACK
HTK (In Addition to HTE) Smartstream G1.5 6MT, D1.5 6MT	HTK+ (In Addition to HTK) Smartstream G1.5 6MT/ 6iMT, D1.5 6MT/6AT
<ul style="list-style-type: none"> Projector Fog Lamps, Floating Type Roof Rail, Front/Rear Mud Guard Driver One Touch Auto Down Power Window, Rheostat Electric Adjust Outside Rear View Mirror with LED Turn Signal 20.32 cm (8.0") Touch Screen Infotainment with ARKAMYS, Android Auto, Apple CarPlay, Rear View Camera with Guidance, Driving Rear View Monitor, Wireless Phone Projection (Only with 20.32 cm (8") Touchscreen) 6 Speakers (Including Tweeters), Luggage Light 	<ul style="list-style-type: none"> R16 - 40.62 cm (16") Hyper Metallic Alloy Wheels, Heartbeat LED DRLs Smart Key with Push Button Start, Auto Cruise Control, Dual Muffler Design, Printed Crash Pad Garnish, Rear Door Sunshade Curtains, LED Sound Mood Lights Rear Wiper & Washer, Rear Parcel Shelf, Rear Defogger Outside Rear View Mirror Auto Folding, Auto Light Control Driver One Touch Auto Up/Down Power Windows, Smart Key Remote Engine Start Fully Automatic Air Conditioner with Silver Garnish (6iMT only) Electric Sunroof with LED Room Lamp (6iMT only), Beige Fabric seat (6iMT only)
HTX (In Addition to HTK) Smartstream G1.5 6MT / IVT, D1.5 6MT	HTX+ (In Addition to HTX) D1.5 6MT
<ul style="list-style-type: none"> R17 - 43.18 cm (17") Hyper Metallic Alloy Wheels, High Line Tyre Pressure Monitor Crown Jewel LED Headlamps, Heartbeat LED DRLs, Sweeping LED Light Bar Ice Cube LED Fog Lamps, Heartbeat LED Tail Lamps, Dual Muffler Design ESC, Hill Hold Control, Vehicle Stability Management, Brake Assist, All Wheel Disc Brake Outside Rear View Mirror Auto Folding, Auto Light Control 26.03 cm (10.25") HD Touchscreen Navigation, UVO Connected Car with OTA Map Updates, Smartwatch Connectivity App, AI Voice Recognition with "Hello Kia" Wake-up Command Smart Pure Air Purifier with Virus & Bacteria Protection, Perfume Diffuser (Fixed Armrest) Auto Antilare Inside Rear View Mirrors (ECM) with UVO Control Buttons Ambient Mood Lighting, LED Sound Mood Lights, Electric Sunroof with LED Room Lamp Black & Beige Dual Tone Interior & Leatherette Seats with Honeycomb Pattern Leather Wrapped D-cut Steering Wheel with Seltos Logo, Metal Scuff Plates with Seltos logo Smart Key with Push Button Start, Auto Cruise Control, Telescopic Steering Wheel Fully Automatic Air Conditioner with Silver Garnish, Rear Door Sunshade Curtains 60:40 Split Rear Seat Folding with Center Armrest, Rear Seat Recline 2 Steps Passenger Seatback Upper Pocket, Smart Key Remote Engine Start 	<ul style="list-style-type: none"> Ventilated Front Seats 8-way Driver Power Seat BOSE Premium Sound System with 8 Speakers Front Parking Sensors, Rear Spoiler Advanced 17.78 cm (7.0") Color Display Cluster Smartphone Wireless Charger Solar Glass - UV Cut (Front Windshield, Door Windows) Black & Brown Dual Tone Interior & Leatherette Seats with Honeycomb Pattern Dual Tone Roof Color (Optional)

TECHNICAL SPECIFICATIONS

ENGINE	SMARTSTREAM G1.5	SMARTSTREAM G1.4 T-GDI	1.5L CRDi VGT				
Fuel Type	Petrol	Petrol	Diesel				
Emission Standard	BS VI	BS VI	BS VI				
Fuel System	MPI	GDI	CRDi				
Displacement (cc)	1497	1353	1493				
Max. Power (ps/ rpm)	115 / 6300	140 / 6000	115 / 4000				
Max. Torque (Nm/ rpm)	144 / 4500	242 / 1500 ~ 3200	250 / 1500 ~ 2750				
Drive/Transmission							
Transmission	6MT / 6iMT / IVT	6MT / 7DCT	6MT / 6AT				
Drive System	2WD						
Suspension/Brakes							
Suspension - Front	McPherson Strut with Coil Spring						
Suspension - Rear	Coupled Torsion Beam Axle (CTBA) with Coil Spring						
Brakes - Front Disc	Brakes - Rear Drum/Disc						
Tyres							
Tyre Size - Vehicle	205 / 65 R 16 - 40.62 cm (16") (HTE, HTK, HTK+), 215 / 60 R 17 - 43.18 cm (17") (HTX, HTX+, GTX(O), GTX+)						
Tyre Size - Spare	205 / 65 R 16 - 40.62 cm (16") (Steel)						
Others							
Gear Shift Indicator	MT / iMT						
Fuel Tank Capacity (l)	50						
Seating Capacity	5						
Boot Space (l)	433**						
POWERTRAIN OPTIONS							
Trims →	HTE	HTK	HTK+	HTX	HTX+	GTX(O)	GTX+
Smartstream G1.5 6MT	●	●	●	●	-	-	-
Smartstream G1.5 6iMT	-	-	-	-	-	-	-
Smartstream G1.5 IVT	-	-	-	●	-	-	-
Smartstream G1.4 T-GDi 6MT	-	-	-	-	-	●	●
Smartstream 1.4 T-GDi 7DCT	-	-	-	-	-	-	●
1.5L CRDi VGT 6MT	●	●	●	●	●	-	-
1.5L CRDi VGT 6AT	-	-	●	-	-	-	●

DIMENSIONS Unit: mm



BODY COLORS

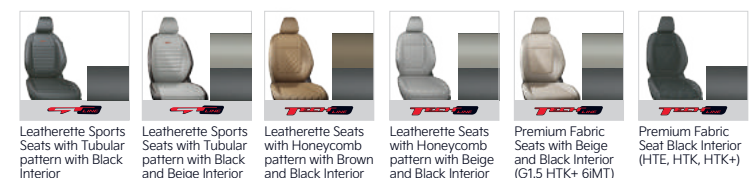
8 Monotone Colors



Dual Tone Color option now with Sunroof (Available with HTX+ & GTX+)



INTERIOR COLOR & SEAT PATTERN



WHEEL LINE-UP



Connected • Adaptive • Responsive • Engage

Kia India Private Limited
NH-44, SY. NO.151-2, Erramanchi, Penukonda Mandal, Anantapur, Andhra Pradesh — 515 164 (India)
kiacare@kiaindia.net
1800 108 5000 | www.kia.com/in
 Look for "Kia India" @

• Nationwide Kia Care network with easy availability of Genuine Spare Parts • 3 Years Warranty for Unlimited Kms & up to 5th Year optional Extended Warranty* • 3 Years 24/7 Roadside Assistance • Kia Link service support app & IoT based workshops with Live Vehicle Tracking for digital experience • My Convenience, the most unique customised maintenance program*

*Terms & Conditions Apply. The product & feature images shown in this brochure is for representation purpose only. Features and specifications as shown may not be part of standard fitment and may vary. The colors shown are subject to availability and may not be available across all variants and may differ slightly from those shown in this brochure. UVO connected car comes with 3 year free subscription. Segment is defined as Mid SUV whose length lies between 4260 - 4390 mm and width between 1775 - 1825 mm. *With R17 Alloy Wheel and Roof Rails. **VDA Method. Kia India Pvt. Ltd. reserves the right to make any changes with respect to the trims, colors, specifications and other details of any model as mentioned in this brochure or to discontinue any model without prior notice. For more details visit your local Kia dealership. Kia India Pvt. Ltd. urges you to follow traffic rules. These are meant to keep you safe on roads. Passenger Seatback upper pocket is not applicable with ventilated seats. The specifications and features may vary depending on models/variants. Smartwatch is not provided with any vehicle. Kia India Pvt. Ltd. reserves the right to make any changes with respect to the features of UVO without prior notice.



Movement that inspires